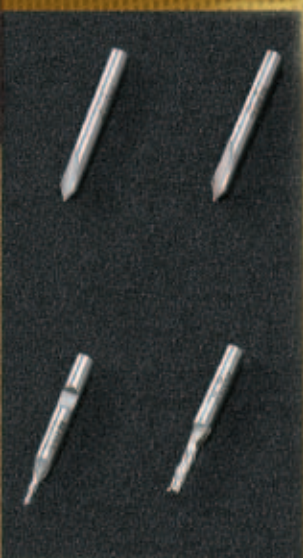
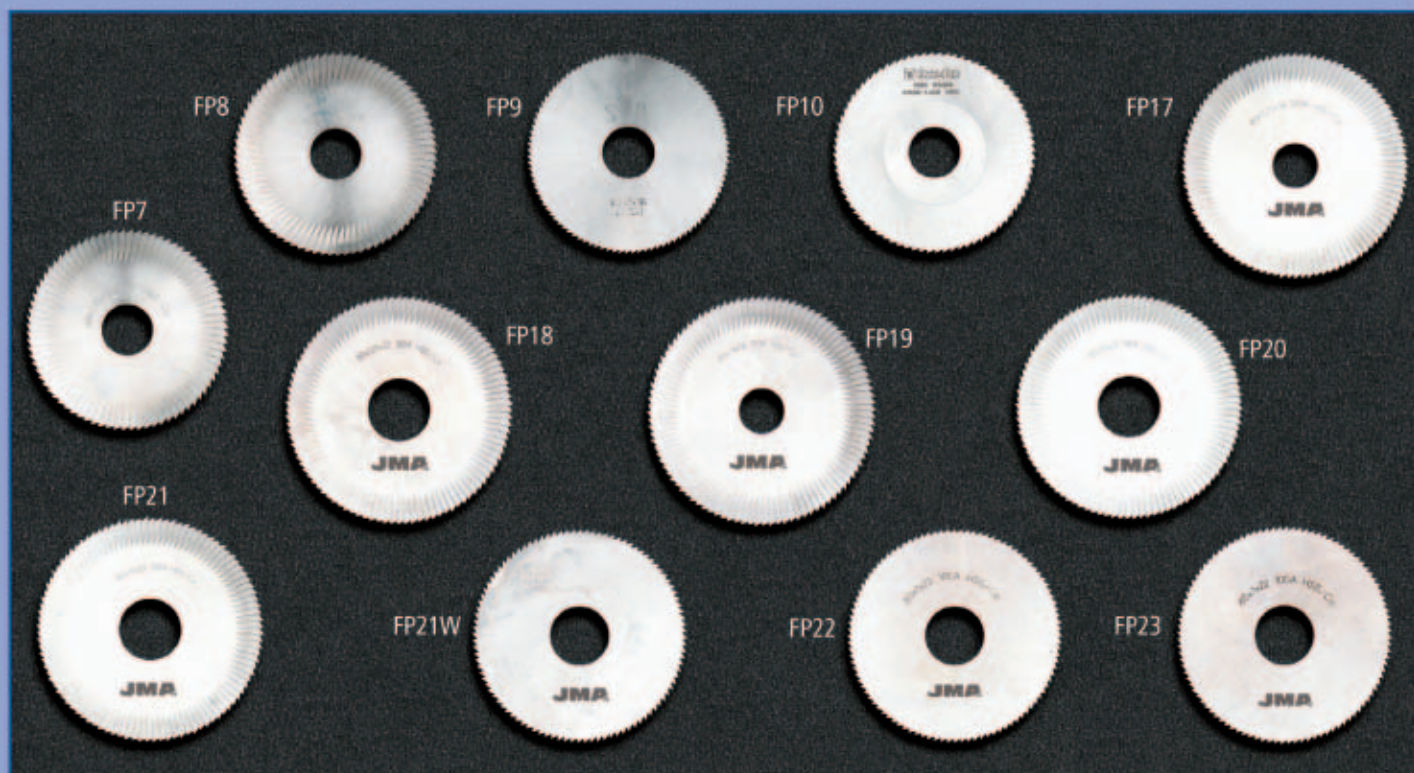


# JMA



2006



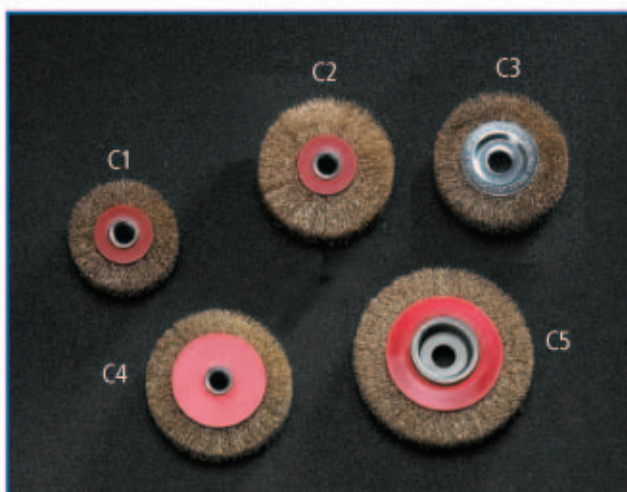


## FRESAS - MILLING CUTTERS - FRAISES - FRÄSE

CODE	A x B x C	MATERIAL	PARA-FOR
FP7	63x1,25x16	HSS	ECCO BIT-DETROIT
FP8*	63x1,4x16	HSS	ECCO BIT-DETROIT
FP9	63x1x16	HSS	ECCO BIT
FP10	63x2,4x16	HSS	ECCO FORD-ECCO ABLOY-PASADENA-NEBRASKA
FP17	80x1,25x16	HSS	SARATOGA-YAKARTA-DAKOTA-TITAN BIT
FP18	80x1,25x22	HSS	ATLANTA-TOPEKA
FP19*	80x1,4x16	HSS	SARATOGA-YAKARTA-DAKOTA G
FP20	80x1,4x22	HSS	ATLANTA-TOPEKA
FP21	80x1,5x22	HSS	DUPLEX-ATLANTA-TOPEKA-KANSAS
FP21W	80x1,5x22	WIDIA	DUPLEX-ATLANTA-TOPEKA-KANSAS
FP22	80x1x16	HSS	SARATOGA-DAKOTA G-YAKARTA-TITAN BIT
FP23	80x1x22	HSS	DUPLEX-ATLANTA-TOPEKA



\* ESTANDAR



## CEPILLOS - BRUSH - BROSSES - BÜRSTE

CODE	A x B	PARA-FOR
C1	60x10	BOSTON
C2	75x10	CE-2
C3	80x13	DAKOTA-DAKOTA EXTRA-ECCO PLUS-ECCO BIT
C4	80x10	DAKOTA ANTIGUA-NEVADA-KANSAS-DENVER
C5	100x13	SARATOGA-YAKARTA

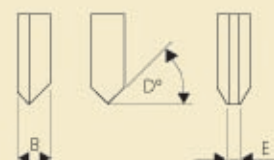




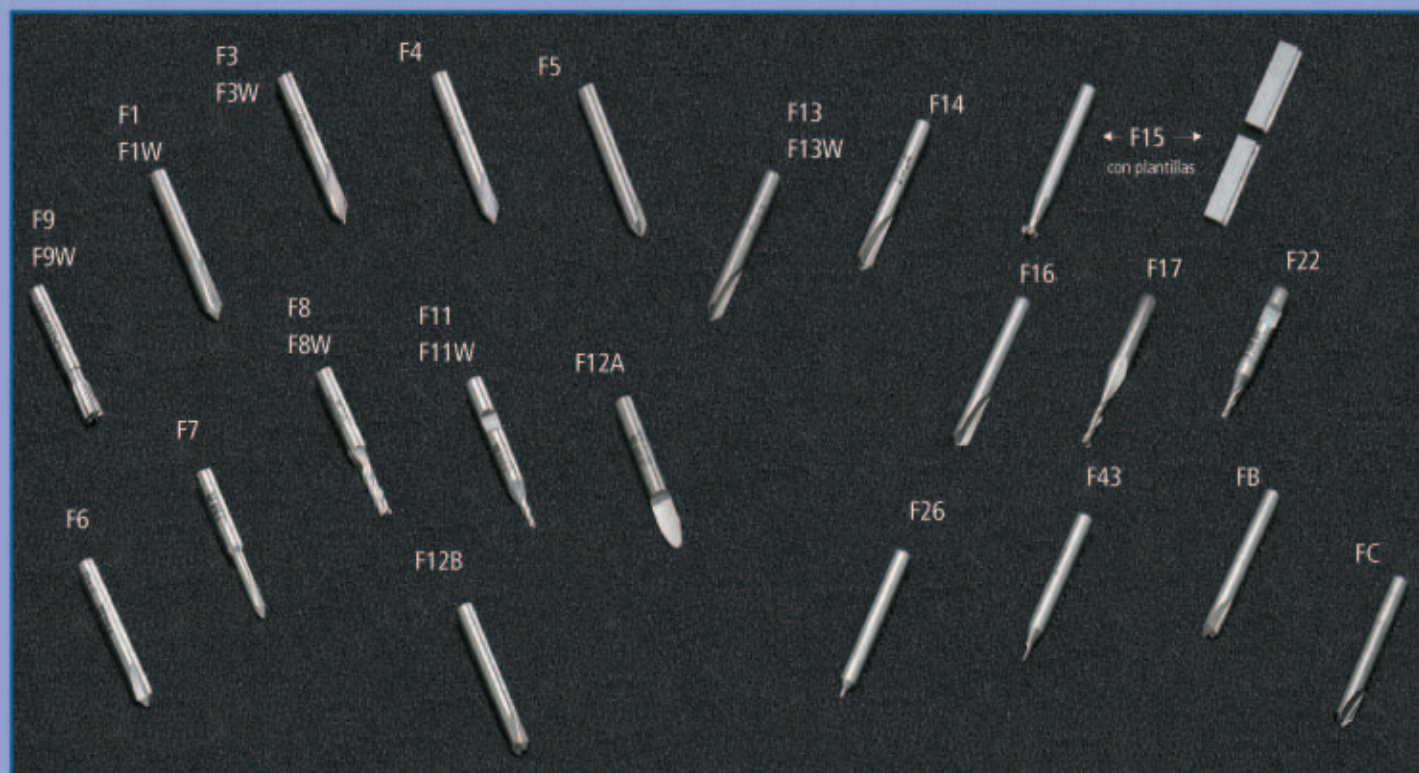


## FRESAS - MILLING CUTTERS - FRAISES - FRÄSE

CODE	A x B x C	D	E	MATERIAL	PARA-FOR
FP1	25x10x10	50	0	HSS	OREGON
FP2W	40x6x10	35	0,1	WIDIA	VIRGINIA
FP3	50x6x12	45	0,15	HSS	KIS
FP4	53x6,3x12	45	0,1	HSS	KIS
FP5	57x5x12,7	45	0,15	HSS	JMA
FP6	60x5x12,7	42	0,1	HSS	SPRINT
FP11	63x5x16	42	0	HSS	ECCO-ECCO PLUS-ECCO AUTOMATIC
FP12	63x5x16	40	0,1	HSS	TUCSON
FP13	63x5x16-150D	42	0,1	HSS	DALLAS
FP14	70x13x7	45	0	HSS	LINCE CE-2
FP15	70x13x7-110	55	0	HSS	LINCE CM-1
FP16	70x5,25x16	38	0,1	HSS	PROCEDURE
FP24	80x5x16	42	0,15	HSS	DAKOTA EXTRA-SARATOGA-NEVADA
FP25	80x5x16,30	42,3	0,15	HSS	DENVER-TITAN-TITAN MASTER LINCE CA-3



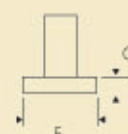
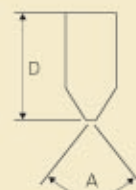




## FRESAS - MILLING CUTTERS - FRAISES - FRÄSE

## PALPADORES - TRACER POINT PALPEUR - TASTER

CODE	A	B	C	D	E	MATERIAL	PARA-FOR	CODE
F1	90	0,8		45	6	HSS		P1
F1W	90	0,8		45	6	WIDIA		P1
F3			1,5	45	6	HSS		P3
F3W			1,5	45	6	WIDIA		P3
F4	90	0,4		45	6	HSS		P4
F5	90	0,9		45	6	HSS		P5
F6	106	1		45	6	HSS		P6
F7	70	0,8		45	6	HSS		P7
F8			4	45	6	HSS		P8
F8W			4	45	6	WIDIA		P8
F11			2,5	45	6	HSS		P11
F11W			2,5	45	6	WIDIA		P11
F12A	100	0,6		45	6	HSS		P12A
F12B	100-90	2,1-2,9		45	6	HSS		P12B
F13	100	0,8		45	6	HSS		P13
F13W	100	0,8		45	6	WIDIA		P13
F14	100	1,45		45	6	HSS		P14
F15 <small>con plantillas</small>		2	5	45	6	HSS		P15
F16	130	0,6		45	6	HSS		P16
F17			3	45	6	HSS		P17
F19	90	1,2		45	6	HSS		P19
F21	85	0,72		45	6	HSS		P21
F22			2,4	45	6	HSS		P22
F26	90	0,6		45	6	HSS		P26
F30	90	3	3	45	6			P30
F43	90	0,7		45	6	HSS		P43
FB	90-90	2,7-3,3		45	6	HSS		PB
FC	80-80			45	6	HSS		PC
F9			5,95	40	6	HSS		P9
F9W			5,95	40	6	WIDIA		P9
							CHICAGO	
CODE	F	G	C	D	E	MATERIAL	PARA-FOR	CODE
F18	10	1		45	6	HSS		
F20	16	1,25		45	6	HSS		
							DAKAR-DAKAR EXPRESS DAKKI-DAYTONA-COLUMBIA ALBANY-ARIZONA	





CODE	DESC
EPG-16	ELECTRO PICK



CODE	DESC
NDPK16	GANZ-16



CODE	DESC
NDPK32	GANZ-32



CODE	DESC
NDPK60	GANZ-60



CODE	DESC
HPG-10	PISTOL PICK



CODE	DESC
PMCB PMSB	MARCADOR-MARKER-MARQUEUR-ABSTEMPLER PUNZÓN-PUNCH-POINÇON-STEMPEL



**ALEJANDRO ALTUNA, S.A.**

Bidekurtzeta, 6 Apdo. 70  
20500 ARRASATE-MONDRAGÓN  
(Gipuzkoa) ESPAÑA  
Tel. + 34 943 79 30 00 / 79 33 32  
Fax. + 34 943 79 72 43  
<http://www.jma.es>  
e-mail: [jma@jma.es](mailto:jma@jma.es)